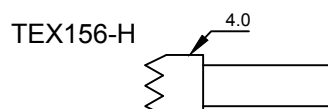
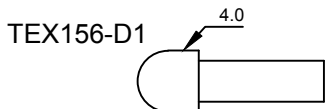
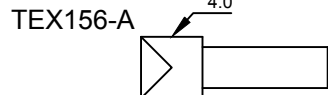
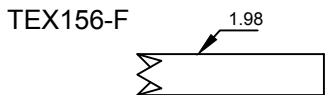
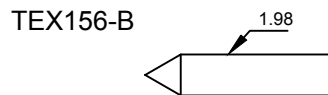
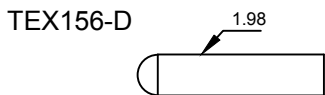
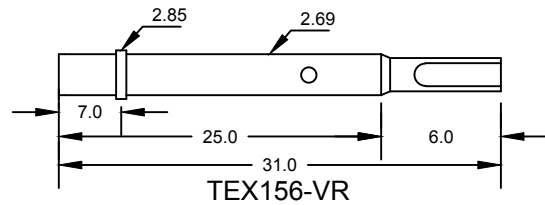
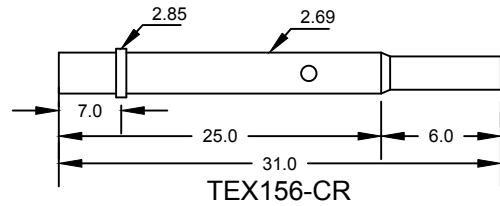


**Available Tip Styles:**



**Available Receptacle:**



- Mechanical
  - Pitch: 4.75mm
  - Recommended travel: 4.3mm
  - Full travel: 6.3mm
  - Spring force: 250g±5% at recommended travel
- Material and plating
  - Plunger: BeCu, Gold plated
  - Barrel: Bronze, Gold plated
  - Spring: Music Wire Gold plated
  - Receptacle: Barss, Gold plated

- Eletrical Specifications
  - Current Rating: 5amps
  - Resistance: Less than 50mΩ
- Receptacle Specifications
  - Mounting Hole Size: 2.75-2.80mm

	Name	Date	Description:	Scale:	
Drawn					
Approved					
Checked					
TEX			Part NO:	TEX156-Series	Index:    Size:
					A4